

WT3521 Wearable Armband Glove Scanner



A Selection of Three Armbands Suited to Various Work Settings

Three distinct types of armbands are on offer, boasting individual characteristics and designs to cater to diverse preferences and requirements. Whether you find yourself in a demanding warehouse environment, a streamlined production setting, or a dynamic retail space, there's an armband tailored precisely to your needs.

Stable Armband AB1800 - The Silicone Strap on AB1800 is Adjustable to Fit a Variety of Mobile Terminals

The silicone strap of AB1800 makes it suitable for securing a variety of mobile terminals. The silicone material fits securely around smartphones or other mobile devices of all sizes, ensuring fit and stability and preventing slippage during movement. The AB1800 armband's ability to adapt to different sizes of mobile devices makes it a practical accessory for those who use different devices or wish to change to a different device.

With Zebra SE4107 Engine, the Bright, Rectangular Illumination Field and Green LED Aiming Spot Enable Accurate Aiming for Exceptional Ease of Use

White illumination increases scanning flexibility by enabling the easy capture of any color barcode, with the megapixel sensor, wide field of view and broad 20 in./50.8cm working range, barcode capture is faster and easier than ever.

Wired Way Ensures Instant Connection

The Type-C cable that connects the scanner to the mobile terminal provides secure and stable data transmission, reducing the chance of data interruption or connection problems. In addition, the Type-C connector, which is designed with a reversible plug so that you don't have to worry about the direction of insertion, supports high-speed data transfer and enables fast transmission.

PRODUCT SPEC SHEET

Wearable Armband Glove Scanner WT3521

ARM BAND PARAMETER

Armband Type	AB1800, AB2000, AB2200
Strap Length	Adjustable, 27cm and 38cm are available for AB2200
Armband Direction	360° rotatable
Applicable Screen Size	AB1800 for terminals with 4.0-6.5 inch screens AB2000 is suitable for screens of any size AB2200 for terminals with 4.7-7.2 inch screens
Armband Material	AB1800 - Silicone, PU, Webbing AB2000 - ABS, PU, Polyester AB2200 - PC, ABS, Webbing

SCANNER PHYSICAL PARAMETER

Scanner Dimensions	64.8mm(L) × 34.6mm(W) × 24.8mm(D)
Scanner Weight	39.2g(Scanner body)
Notification	LED, Buzzer, Vibration

INTERFACE

USB Interface	USB Type-C
Coiled Cable	Both ends Type-C connector, 165mm
USB Protocol	USB HID Keyboard, USB VCP (Virtual Serial Port)
Multilingual Keyboards	USB HID mode supports multilingual keyboards

DECODE RANGES

5 mil Code 39	61.0 - 241.0MM
5 mil Code 128	71.0 - 229.0MM
6.6 mil PDF417	61.0 - 203.0MM
10 mil DataMatrix	74.0 - 216.0MM
100% UPC-A	46.0 - 495.0MM
15 mil QR Code	30.0 - 292.0MM
20 mil QR Code	30.0 - 356.0MM

PERFORMANCE CHARACTERISTICS

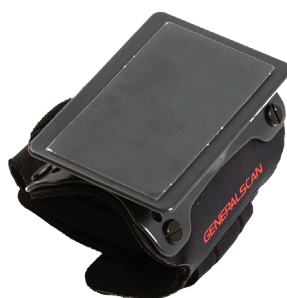
Optical Resolution	1280 x 960 pixels
Shutter	Rolling shutter
Sensor	2D CMOS Image
Skew, Pitch & Roll	Skew tolerance: ±60° from normal Pitch tolerance: ±60° from normal Roll tolerance: 360° from normal
Illumination	White LED
Aiming	Green LED
Supported Symbolologies	1D: Code39, Code128, Codabar, Code11, UPC/EAN, Interleaved 2 of 5, Discrete 2 of 5, Chinese 2 of 5, Matrix 2 of 5, Korean 3 of 5, GS1 Databar, Code93, MSI, Composite 2D: PDF417, Postal CodesMicro PDF, Micro PDF417, Code128 Emulation, Aztec, Data Matrix, GS1 Data Matrix, QR Code, GS1 QR, Maxicode, Micro QR, Han Xin, Grid Matrix

USER ENVIRONMENT

Ambient Light	Max 107639lux (direct sunlight)
Operating Temperature	-10°C~50°C
Storage Temperature	-10°C~50°C
Humidity	5% - 85% non-condensing
Drop Spec.	Multiple 4.9ft./1.5M drops to concrete
Tumble Spec.	Scanner body withstands 20,000 times from 3.3ft./1M with frequency of 10 times per minute.
Electrostatic Discharge (ESD)	±8kv dc discharge, ±15kv air discharge
Certificates	RoHS, NOM, EAC



AB1800



AB2000



AB2200

GENERALSCAN

Generalscan Inc.

200 Buckelew Ave, Jamesburg,
NJ 08831, USA
+1 732 895 6821

Generalscan Electronics GmbH

Hochstraße 42, 52525
Heinsberg Germany
+49 1516 7161256

Generalscan LLC

Calle San Luis Potosi 51,
Roma Norte 06700,
Ciudad de México
+52 5552727861

GENERALSCAN ELEKTRONIK VE TEKNOLOJİ SAN. VE TİC. LTD. ŞTİ.

FSM Mah. Siir Sk. Relux Plaza No 10,
Ümraniye 34764,
İstanbul, Turkey
+90 542 478 5873