

WT1523 Wearable Armband Ring Scanner



Easy-to-Wear Armband AB2000 - Slightly Stick It on and You're Ready to Go!

AB2000 is designed for effortless wearability, allowing users to quickly and easily attach it by simply sticking it on. By requiring minimal effort to put on, the AB2000 enables users to get ready swiftly for their activities without any complicated adjustments. This enhances user convenience, ensuring that users can seamlessly incorporate it into their daily routines without any unnecessary complications.

Adaptive Armband AB2200-Adjusts the Side Screws to Make It in Different Widths for Mounting Various Sizes of Mobile Terminals

The AB2200 features a unique design where users can adjust the side screws to alter the width of the armband. This adjustable feature allows the armband to accommodate different sizes of mobile terminals. Users can easily adjust the armband to fit their specific device size, providing a snug and secure attachment. This adaptability is particularly beneficial for individuals who frequently switch between different mobile terminals or have devices with varying dimensions.

Warm White Illumination along with Red Cross Laser Aiming Enhanced Accuracy, Speed, and User Comfort

Warm white illumination reduces glare and reflection, making barcodes easier to read in bright or highly reflective environments. Red cross laser ensures precise targeting even in low-light or high-contrast conditions. In addition, cross laser provides a clear visual guide, helping users accurately align the scanner with the barcode, reducing misalignment errors and minimizes the need for multiple scan attempts. The combination of warm white illumination and red cross laser enhance the readability of low-contrast, faded, or damaged barcodes. What's important is the warm lighting is softer on the eyes, reducing eye strain for workers performing repetitive scanning tasks.

Adjustable Strap Armband - Well Fits a Variety of Arm Sizes

The straps of Generalscan armbands are adjustable, allowing them to fit various arm sizes. They accommodate different user's needs, regardless of their arm thickness or length, by adjusting the strap for a comfortable wearing experience. This adjustable design enhances their versatility and comfort, making them accessible to a wider range of users.

PRODUCT SPECIFICATION

Wearable Armband Ring Scanner WT1523

ARM BAND PARAMETER

Armband Type	AB1800, AB2000, AB2200
Strap Length	Adjustable, 27cm and 38cm are available for AB2200
Armband Direction	360° rotatable
Applicable Screen Size	AB1800 for terminals with 4.0-6.5 inch screens AB2000 is suitable for screens of any size AB2200 for terminals with 4.7-7.2 inch screens
Armband Material	AB1800 - Silicone, PU, Webbing AB2000 - ABS, PU, Polyester AB2200 - PC, ABS, Webbing

SCANNER PHYSICAL PARAMETER

Dimensions	66.54mm(L) × 34.73mm(W) × 25.16mm(H)
Weight	27.0g(Scanner body)
Notification	LED, Buzzer, Vibration

INTERFACE

USB Interface	USB Type-C
Coiled Cable	Both ends Type-C connector, 165mm
USB Protocol	USB HID Keyboard, USB VCP (Virtual Serial Port)
Multilingual Keyboards	USB HID mode supports multilingual keyboards

DECODE RANGES

13mil EAN13	55.0 - 350.0MM
5mil Code 39	55.0 - 120.0MM
13mil Code 128	55.0 - 350.0MM
15mil QR	25.0 - 230.0MM
10mil Data Matrix	45.0 - 150.0MM
6.67mil PDF417	55.0 - 145.0MM

PERFORMANCE CHARACTERISTICS

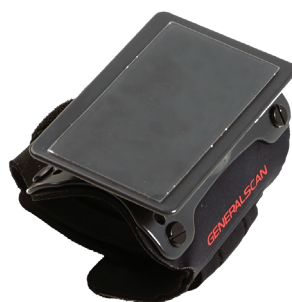
Optical Resolution	640×480 pixels
Shutter	Global Shutter
Sensor	2D CMOS Image
Skew, Pitch & Roll	Skew tolerance: ±50° from normal Pitch tolerance: ±50° from normal Roll tolerance: 360° from normal
Illumination	Warm White LED
Aiming	Red Cross Laser
Supported Symbologies	1D: Code 128(ISBT 128, AIM 128, GS1 128) , EAN-13, EAN-8, UPCE0, UPCE1, UPC-A, ISBN, ISSN, Code11, Interleaved 2 of 5, Code39, Code93, Code32, Codabar, Matrix 2 of 5, Industrial 25, IATA25, MSI Plessey, GS1 DataBar, GS1 DataBar Limited, GS1 DataBar Expanded, Plessey, Febraban, Composite 2D: QR Code, Micro QR, Data Matrix, PDF417, Micro PDF417, Aztec, Maxicode, Han Xin Code, Dotcode, Composite

USER ENVIRONMENT

Ambient Light	Max 100000lux (direct sunlight)
Operating Temperature	-10°C~50°C
Storage Temperature	-10°C~50°C
Humidity	5% - 85% non-condensing
Drop Spec.	Multiple 4.9ft./1.5M drops to concrete
Tumble Spec.	Scanner body withstands 20,000 times from 3.3ft./1M with frequency of 10 times per minute.
Electrostatic Discharge (ESD)	±8kv dc discharge, ±15kv air discharge
Certificates	RoHS, NOM, EAC



AB1800



AB2000



AB2200

GENERALSCAN

Generalscan Inc.
Generalscan LLC
Generalscan Electronics GmbH

+1 732 391 7747 ☎

+90 542 478 5873 📞

+1 732 391 7747

sales@generalscan.cloud 📧