

# WT3523 Wearable Armband Glove Scanner



## A Selection of Three Armbands Suited to Various Work Settings

Three distinct types of armbands are on offer, boasting individual characteristics and designs to cater to diverse preferences and requirements. Whether you find yourself in a demanding warehouse environment, a streamlined production setting, or a dynamic retail space, there's an armband tailored precisely to your needs.

## Stable Armband AB1800 - The Silicone Strap on AB1800 is Adjustable to Fit a Variety of Mobile Terminals

The silicone strap of AB1800 makes it suitable for securing a variety of mobile terminals. The silicone material fits securely around smartphones or other mobile devices of all sizes, ensuring fit and stability and preventing slippage during movement. The AB1800 armband's ability to adapt to different sizes of mobile devices makes it a practical accessory for those who use different devices or wish to change to a different device.

## Red cross laser aiming ensures precise targeting and efficient scanning

Red cross laser aiming enables precise aiming, speeds up barcode alignment, improves efficiency, and is clearly visible against most backgrounds, making it suitable for complex environments, so it reduces misreading, improves aiming accuracy, and enhances the user experience.

## Wired Way Ensures Instant Connection

The Type-C cable that connects the scanner to the mobile terminal provides secure and stable data transmission, reducing the chance of data interruption or connection problems. In addition, the Type-C connector, which is designed with a reversible plug so that you don't have to worry about the direction of insertion, supports high-speed data transfer and enables fast transmission.

## PRODUCT SPEC SHEET

### Wearable Armband Glove Scanner WT3523

#### ARM BAND PARAMETER

Armband Type	AB1800, AB2000, AB2200
Strap Length	Adjustable, 27cm and 38cm are available for AB2200
Armband Direction	360° rotatable
Applicable Screen Size	AB1800 for terminals with 4.0-6.5 inch screens AB2000 is suitable for screens of any size AB2200 for terminals with 4.7-7.2 inch screens
Armband Material	AB1800 - Silicone, PU, Webbing AB2000 - ABS, PU, Polyester AB2200 - PC, ABS, Webbing

#### INTERFACE

USB Interface	USB Type-C
Coiled Cable	Both ends Type-C connector, 165mm
USB Protocol	USB HID Keyboard, USB VCP (Virtual Serial Port)
Multilingual Keyboards	USB HID mode supports multilingual keyboards

#### USER ENVIRONMENT

Ambient Light	Max 100000lux (direct sunlight)
Operating Temperature	-10°C~50°C
Storage Temperature	-10°C~50°C
Humidity	5% - 85% non-condensing
Drop Spec.	Multiple 4.9ft./1.5M drops to concrete
Tumble Spec.	Scanner body withstands 20,000 times from 3.3ft./1M with frequency of 10 times per minute.
Electrostatic Discharge (ESD)	±8kv dc discharge, ±15kv air discharge
Certificates	RoHS, NOM, EAC

#### SCANNER PHYSICAL PARAMETER

Scanner Dimensions	64.8mm(L) × 34.6mm(W) × 24.8mm(D)
Scanner Weight	37.0g(Scanner body)
Notification	LED, Buzzer, Vibration

#### PERFORMANCE CHARACTERISTICS

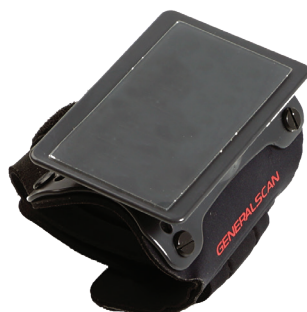
Optical Resolution	1280 x 800 pixels
Shutter	Global shutter
Sensor	2D CMOS Image
Skew, Pitch & Roll	Skew tolerance: ±60° from normal Pitch tolerance: ±60° from normal Roll tolerance: 360° from normal
Illumination	White LED
Aiming	Red Cross Laser
Supported Symbolologies	Code39, Code128, Code 39 full ascii, Trioptic Code39, Code 32, UPC-A, UPC-E, UPC-E1, UPC-E+, UPC-A+, EAN8/JAN8, EAN13/JAN13, Bookland EAN/ISBN, MSI, Codabar, Code11, Interleaved 2 of 5, Industrial 2 of 5, Chinese 2 of 5, Matrix 2 of 5, ISBT, GS1 Databar14, GS1 Databar Limited, GS1 Databar Expanded, GS1-128, Code93 2D: PDF417, Micro PDF417, QR Code, DataMatrix, Micro QR, Hanxin, Grid Matrix, Aztec, Maxicode, GS1 QR, GS1 DataMatrix, GS1 Composite(CC-A/CC-B/CC-C)

#### DECODE RANGES

3.3mil Code 39	110.0 - 190.0MM
5mil Code 39	80.0 - 310.0MM
5mil QR Code	40.0 - 390.0MM
13mil EAN13	60.0 - 700.0MM
10mil DataMatrix	90.0 - 270.0MM
6.7mil PDF417	110.0 - 260.0MM



AB1800



AB2000



AB2200

# GENERALSCAN

Generalscan Inc.  
Generalscan LLC  
Generalscan Electronics GmbH

+1 732 391 7747 ☎

+90 542 478 5873 ☎

+1 732 391 7747

sales@generalscan.cloud ✉