

WT5523 Wearable Armband Ring Scanner



Versatile Armband AB2200 - Customize Width Using Side Screws to Secure Mobile Devices of Different Sizes

The versatile AB2200 armband is a practical solution for securing mobile devices of various sizes. Its innovative design allows users to customize the width by adjusting the side screws, ensuring a snug and secure fit for mobile terminals in different sizes. This adaptability makes the AB2200 armband a convenient accessory for individuals who use different devices or frequently switch between devices, offering peace of mind and stability during activities and on the go.

Adjustable Strap Armband - Well Fits a Variety of Arm Sizes

The straps of Generalscan armbands are adjustable, allowing them to fit various arm sizes. They accommodate different user's needs, regardless of their arm thickness or length, by adjusting the strap for a comfortable wearing experience. This adjustable design enhances their versatility and comfort, making them accessible to a wider range of users.

Scan engine, Honeywell N6803

The engine N6803 takes the reading range required in warehouse and distribution centers to new heights. Its dual lens architecture and rapid switching mechanism between near and far distances eliminate the need for refocusing, saving valuable time. The Smart Adaptus™ 8.0 technology integrated in GS R5523 extends the single lens read range of standard range optics and dual lens design for simultaneous close and far image capture. Reads barcodes from 6CM to 10M.

Wired Way Ensures Instant Connection

The Type-C cable that connects the scanner to the mobile terminal provides secure and stable data transmission, reducing the chance of data interruption or connection problems. In addition, the Type-C connector, which is designed with a reversible plug so that you don't have to worry about the direction of insertion, supports high-speed data transfer and enables fast transmission.

PRODUCT SPEC SHEET

Wearable Armband Ring Scanner WT5523

ARM BAND PARAMETER

Armband Type	AB1800, AB2000, AB2200
Strap Length	Adjustable, 27cm and 38cm are available for AB2200
Armband Direction	360° rotatable
Applicable Screen Size	AB1800 for terminals with 4.0-6.5 inch screens AB2000 is suitable for screens of any size AB2200 for terminals with 4.7-7.2 inch screens
Armband Material	AB1800 - Silicone, PU, Webbing AB2000 - ABS, PU, Polyester AB2200 - PC, ABS, Webbing

SCANNER PHYSICAL PARAMETER

Scanner Dimensions	70.00MM(H) × 36.00MM(W) × 26.80MM(D)
Scanner Weight	38.7g (scan body)
Notification	LED, Buzzer, Vibration

INTERFACE

USB Interface	USB Type-C
Coiled Cable	Both ends Type-C connector, 165mm
USB Protocol	USB HID Keyboard, USB VCP (Virtual Serial Port)
Multilingual Keyboards	USB HID mode supports multilingual keyboards

DECODE RANGES

5 mil Code 39	137 - 396 mm
7 mil PDF	137 - 415 mm
10 mil Code 128	90 - 1399 mm
10 mil QR Code	128 - 412 mm
13 mil UPC	68 - 1690 mm
20 mil Code 39	88 - 2848 mm
55 mil Code 39	— - 5912 mm
100 mil Code 39	— - 9849 mm

PERFORMANCE CHARACTERISTICS

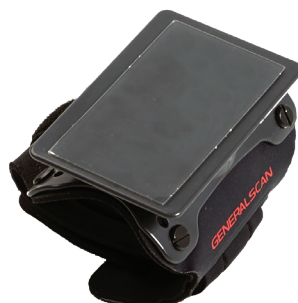
Optical Resolution	Near: 1920 pixel x 1200 pixel Far: 1280 pixel x 800 pixel
Shutter	Global shutter
Sensor	2D CMOS Image
Skew, Pitch & Roll	Skew tolerance: ±60° from normal Pitch tolerance: ±60° from normal Roll tolerance: 360° from normal
Field of View	Near: 48°(H)x21°(V) Far: 20°(H)x12°(V)
Illumination	White LED
Aiming	Red Laser
Supported Symbolologies	1D: Codabar, Code 11, Code 128, Code 2 of 5, Code 39, Code 93 and 93i, EAN/JAN-13, EAN/JAN 8, IATA Code 2 of 5, Interleaved 2 of 5, Matrix 2 of 5, MSI, GS1 Databar, UPC-A, UPC E, UPC-A/EAN-13 with Extended Coupon Code, Coupon GS1 Code 32(PARAF), EAN-UCC Emulation 2D: Codablock A, Codablock F, PDF417, MicroPDF417, Aztec Code, Data Matrix, MaxiCode, QR Code, Chinese Sensible (Han Xin), Grid Matrix, Dot Code Postal: Australian Post, British Post, Canadian Post, China Post, Japanese Post, Korea Post, Netherlands Post, Planet Code, Postnet

USER ENVIRONMENT

Ambient Light	Max 100,000lux (direct sunlight)
Operating Temperature	-10°C~50°C
Storage Temperature	-10°C~50°C
Humidity	5% - 85% non-condensing
Drop Spec.	Survive from multiple 4.9ft./1.5M drops to concrete
Tumble Spec.	Scanner body withstands 20,000 times from 3.3ft./1M with frequency of 10 times per minutes.
Electrostatic Discharge (ESD)	±8kv dc discharge, ±15kv air discharge
Certificates	RoHS, NOM



AB1800



AB2000



AB2200

GENERALSCAN

Generalscan Inc.

200 Buckelew Ave, Jamesburg,
NJ 08831, USA
+1 732 895 6821

Generalscan Electronics GmbH

Hochstraße 42, 52525
Heinsberg Germany
+49 1516 7161256

Generalscan LLC

Calle San Luis Potosi 51,
Roma Norte 06700,
Ciudad de México
+52 5552727861

GENERALSCAN ELEKTRONIK VE TEKNOLOJİ SAN. VE TİC. LTD. ŞTİ.

FSM Mah. Siir Sk. Relux Plaza No 10,
Ümraniye 34764,
İstanbul, Turkey
+90 542 478 5873