

WT5522 Wearable Armband Ring Scanner



Well-adjusted Armband AB1800 - The Adjustable Silicone Strap Accommodates Various Mobile Devices

The AB1800 durable armband features an adjustable silicone strap that caters to a wide array of mobile devices. This versatile accessory ensures a secure fit for mobile devices of different sizes, providing users with flexibility and peace of mind during use. Its adaptable nature to accommodate diverse device sizes makes the AB1800 armband a versatile choice for users with multiple devices or those looking to switch between them effortlessly.

Three Kinds of Armbands for Diverse Work Environments

There are three types of armbands available for purchase, each with unique features and styles to meet different preferences and needs. Whether you're using them in a heavy-duty warehouse, a well-organized production line, or a bustling retail operation, there's one for you, and each one is customized just for you.

True-Wearable Ring Trigger - Easy to Wear on Your Index Finger Like a Ring

Users can wear the scanner on their index finger, allowing them to efficiently scan barcodes while keeping their hands free for other tasks. This is particularly useful in industries like logistics and warehousing where workers need to handle packages or products. The ring scanners typically provide wireless connectivity, enhancing flexibility and enabling seamless integration with various devices.

R5522 Mid-Range Scanner Expands the Working Range Even Further, to More Than 20ft. / 6m.

With a wide field of view, the R5522 also enables reading of larger bar codes, as well as simultaneous capture of multiple bar codes in milliseconds. Pick list mode enables users to easily select a single bar code to capture on a field of bar codes.

PRODUCT SPECIFICATION

Wearable Armband Ring Scanner WT5522

ARMBAND PARAMETER

Armband Type	AB1800, AB2000, AB2200
Strap Length	Adjustable, 27cm and 38cm are available for AB2200
Armband Direction	360° rotatable
Applicable Screen Size	AB1800 for terminals with 4.0-6.5 inch screens AB2000 is suitable for screens of any size AB2200 for terminals with 4.7-7.2 inch screens
Armband Material	AB1800 - Silicone, PU, Webbing AB2000 - ABS, PU, Polyester AB2200 - PC, ABS, Webbing

INTERFACE

USB Interface	USB Type-C
Coiled Cable	Both ends Type-C connector, 165mm
USB Protocol	USB HID Keyboard, USB VCP (Virtual Serial Port)
Multilingual Keyboards	USB HID mode supports multilingual keyboards

USER ENVIRONMENT

Ambient Light	Max 107639lux (direct sunlight)
Operating Temperature	-10°C~50°C
Storage Temperature	-10°C~50°C
Humidity	5% - 85% non-condensing
Drop Spec.	Multiple 4.9ft./1.5M drops to concrete
Tumble Spec.	Scanner body withstands 20,000 times from 3.3ft./1M with frequency of 10 times per minute.
Electrostatic	±8kv dc discharge, ±15kv air discharge
Discharge (ESD)	
Certificates	RoHS, NOM, EAC

SCANNER PHYSICAL PARAMETER

Dimensions	70.0mm(L)×36.4mm(W)×26.8mm(D)
Weight	40.7g(Scanner body)
Notification	LED, Buzzer, Vibration

PERFORMANCE CHARACTERISTICS

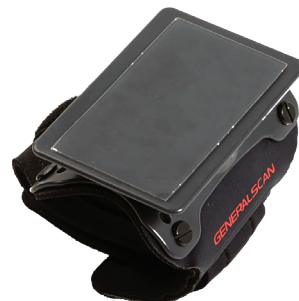
Optical Resolution	1280 x 960 pixels
Shutter	Global shutter
Sensor	2D CMOS Image
Skew, Pitch & Roll	Skew tolerance: ±60° from normal Pitch tolerance: ±60° from normal Roll tolerance: 360° from normal
Field of View	Horizontal 31°, Vertical 23°
Illumination	White LED
Aiming	Red Cross Laser
Supported Symbologies	1D: Code39, Code128, Codabar, Code11, UPC/EAN, Interleaved 2 of 5, Discrete 2 of 5, Chinese 2 of 5, Matrix 2 of 5, Korean 3 of 5, GS1 Databar, Code93, MSI, Composite 2D: PDF417, Postal CodesMicro PDF, Micro PDF417, Code128 Emulation, Aztec, Data Matrix, GS1 Data Matrix, QR Code, GS1 QR, Maxicode, Micro QR, Han Xin, Grid Matrix, DotCode, OCR

DECODE RANGES

5 mil Code 128	188.0 - 406.0MM
5 mil PDF417	206.0 - 333.0MM
7.5 mil DataMatrix	211.0 - 325.0MM
10 mil DataMatrix	178.0 - 432.0MM
13mil UPC-A	58.0 - 965.0MM
15 mil Code 128	102.0 - 1016.0MM
20mil Code 39	53.0 - 1372.0MM
100 mil Code 39	279.0 - 4369.0MM
160 mil DataMatrix	292.0 - 3505.0MM
20 mil QR Code	71.0 - 676.0MM



AB1800



AB2000



AB2200

GENERALSCAN

Generalscan Inc.

200 Buckelew Ave, Jamesburg,
NJ 08831, USA
+1 732 895 6821

Generalscan Electronics GmbH

Hochstraße 42, 52525
Heinsberg Germany
+49 1516 7161256

Generalscan LLC

Calle San Luis Potosi 51,
Roma Norte 06700,
Ciudad de México
+52 5552727861

GENERALSCAN ELEKTRONIK VE TEKNOLOJİ SAN. VE TİC. LTD. ŞTİ.

FSM Mah. Siir Sk. Relux Plaza No 10,
Ümraniye 34764,
İstanbul, Turkey
+90 542 478 5873