

WT5524 Wearable Armband Ring Scanner



Whether the Item is in Hand or over 40ft./12.2m Away, R5524 can Capture It!

R5524 features a green laser aimer that's up to 7x more visible than red, even in bright sunlight, and Zebra's PRZM Intelligent Imaging Technology to deliver first-time-every, time decoding. With adjustable illumination and intelligent autofocus, users do not have to sacrifice scanning speed for working range

A Selection of Three Armbands Suited to Various Work Settings

Three distinct types of armbands are on offer, boasting individual characteristics and designs to cater to diverse preferences and requirements. Whether you find yourself in a demanding warehouse environment, a streamlined production setting, or a dynamic retail space, there's an armband tailored precisely to your needs.

Plug-and-Play, No Bluetooth Pairing Process

The Type-C cable secures a dependable and steady link between the scanner and your mobile device, reducing the chances of data interruptions or connectivity glitches. Featuring a reversible plug setup, the Type-C connector streamlines the insertion procedure, ensuring effortless connections and enabling high-speed data transfers for quick and effective communication.

Rotating Armbands - Enable Viewing in Landscape and Portrait Modes

Equipped with a 360° rotatable mechanism, these armbands offer users the convenience of effortlessly switching their mobile devices between landscape and portrait orientations. This flexibility empowers users to tailor their viewing experience to suit their tasks, content, or individual preferences. Whether opting for a wider display in landscape mode or a more ergonomic setup in portrait mode, users can easily customize their viewing orientation for enhanced comfort and usability.

PRODUCT SPEC SHEET

Wearable Armband Ring Scanner WT5524

ARMBAND PARAMETER

Armband Type	AB1800, AB2000, AB2200
Strap Length	Adjustable, 27cm and 38cm are available for AB2200
Armband Direction	360° rotatable
Applicable Screen Size	AB1800 for terminals with 4.0-6.5 inch screens AB2000 is suitable for screens of any size AB2200 for terminals with 4.7-7.2 inch screens
Armband Material	AB1800 - Silicone, PU, Webbing AB2000 - ABS, PU, Polyester AB2200 - PC, ABS, Webbing

SCANNER PHYSICAL PARAMETER

Scanner Dimensions	70.00mm(L) × 36.00mm(W) × 26.80mm(H)
Scanner Weight	37.5g (scanner body)
Notification	LED, Buzzer, Vibration

INTERFACE

USB Interface	USB Type-C
Coiled Cable	Both ends Type-C connector, 165mm
USB Protocol	USB HID Keyboard, USB VCP (Virtual Serial Port)
Multilingual Keyboards	USB HID mode supports multilingual keyboards

USER ENVIRONMENT

Ambient Light	Max 107,639 lux (direct sunlight)
Operating Temperature	14°F ~ 122°F / -10°C~50°C
Storage Temperature	14°F ~ 122°F / -10°C~50°C
Humidity	5% - 85% non-condensing
Drop Spec.	Multiple 4.9ft./1.5M drops to concrete
Tumble Spec.	Scanner body withstands 20,000 times from 3.3ft./1M with frequency of 10 times per minutes.
Electrostatic Discharge (ESD)	±8kv dc discharge, ±15kv air discharge
Certificates	RoHS, NOM, EAC

PERFORMANCE CHARACTERISTICS

Optical Resolution	2688 x 1520 pixels
Shutter	Global shutter
Sensor	2D CMOS Image
Skew, Pitch & Roll	Skew tolerance: ±60° from normal Pitch tolerance: ±60° from normal Roll tolerance: 360° from normal
Field of View	Horizontal 37°, Vertical 21.4°
Illumination	White LED
Aiming	Green Laser
Supported Symbolologies	1D: Code39, Code128, Codabar, Code11, UPC/EAN, Interleaved 2 of 5, Discrete 2 of 5, Chinese 2 of 5, Matrix 2 of 5, Korean 3 of 5, GS1 Databar, Code93, MSI, Composite 2D: PDF417, Postal CodesMicro PDF, Micro PDF417, Code128 Emulation, Aztec, Data Matrix, GS1 Data Matrix, QR Code, GS1 QR, Maxicode, Micro QR, Han Xin, Grid Matrix, DotCode, OCR

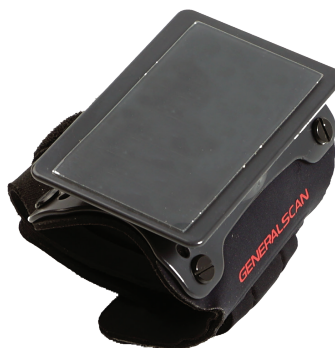
DECODE RANGES

Note: Printing resolution, contrast and ambient light dependent

3 mil Code 39	69.0 - 411.0MM
5 mil Code 39	64.0 - 676.0MM
5 mil PDF417	71.0 - 498.0MM
6.67 mil PDF417	66.0 - 650.0MM
10 mil DataMatrix	56.0 - 688.0MM
13 mil 100% UPCA	64.0 - 1800.0MM
15mil Code 128	182.0 - 1829.0MM
20mil Code 39	FOV limited - 2769.0MM
55 mil Code 39	FOV limited - 7442.0MM
100 mil Code 39	FOV limited - 14072.0MM
100 mil DataMatrix	FOV limited - 6858.0MM



AB1800



AB2000



AB2200

GENERALSCAN

Generalscan Inc.

200 Buckelew Ave, Jamesburg,
NJ 08831, USA
+1 732 895 6821

Generalscan Electronics GmbH

Hochstraße 42, 52525
Heinsberg Germany
+49 1516 7161256

Generalscan LLC

Calle San Luis Potosi 51,
Roma Norte 06700,
Ciudad de México
+52 5552727861

GENERALSCAN ELEKTRONIK VE TEKNOLOJİ SAN. VE TİC. LTD. ŞTİ.

FSM Mah. Siir Sk. Relux Plaza No 10,
Ümraniye 34764,
İstanbul, Turkey
+90 542 478 5873