

**GENERALSCAN**

# Flexgrip-wireless

**GS GHR201**

**QUICK START GUIDE**



**EN**

## GENERALSCAN QUICK START GUIDE

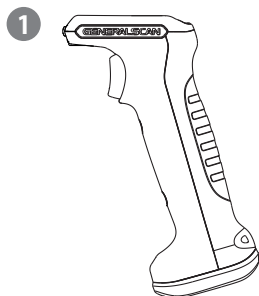
This guide introduces the assembly method and the basic configuration barcodes of the Flexgrip GS GHR201, you can adjust the settings and modes of your device according to your wishes and get it work easily. If any further questions, please contact [support@generalscan.cloud](mailto:support@generalscan.cloud)

## COPYRIGHT

**GENERALSCAN** reserves the right to make changes to any product to improve reliability, function, or design.

GENERALSCAN does not assume any product liability arising out of, or in connection with the application or use of any product, circuit, or application described herein.

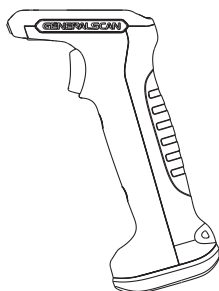
## UNPACKING



GS GHR201-S x 1

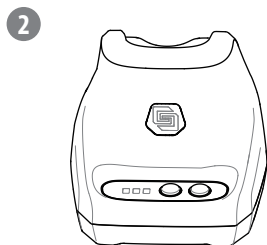
for Scanner GS R152# & GS R352#

OR



GS GHR201-L x 1

for Scanner GS R1120 & GS R552#

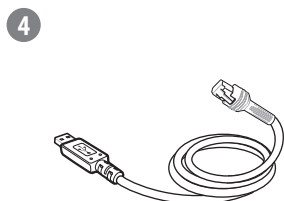


GS GDH201 x 1  
for GS GHR201

3

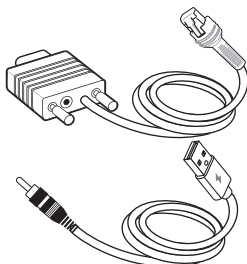


Resource Download Card x 1



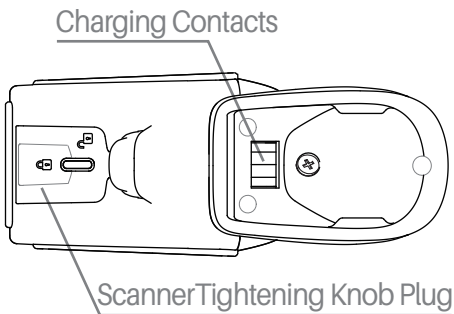
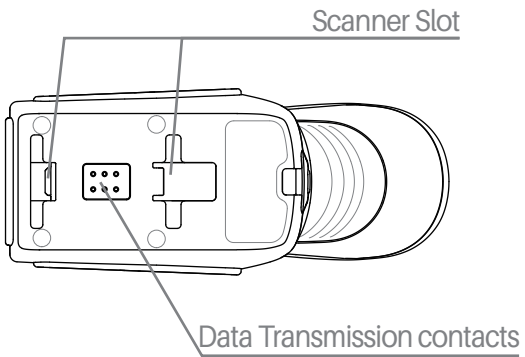
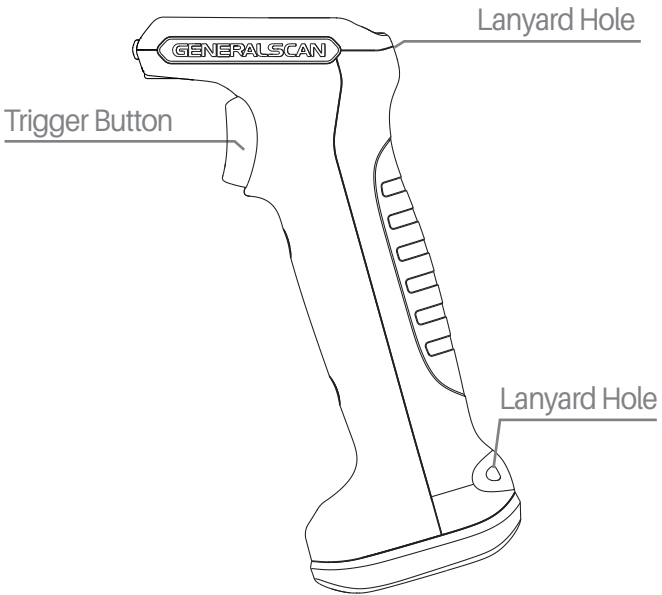
RJ45/USB Cable x 1  
for GDH201-RJ45/USB

OR

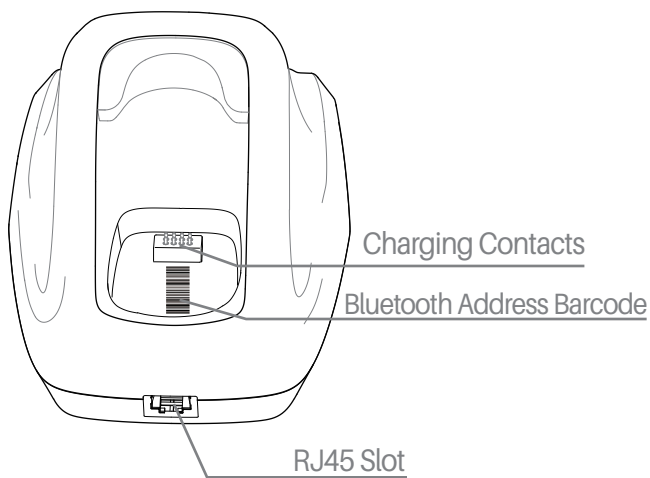
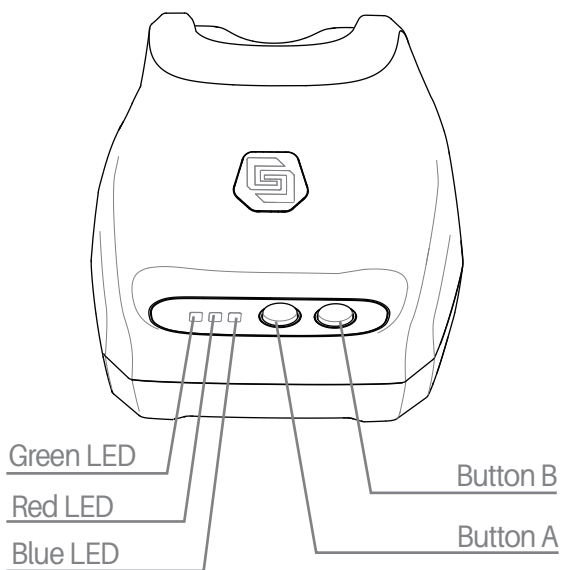


RJ45/RS232 Cable & DC Cable x 1  
for GDH201-RJ45/RS232

## SCANNER FEATURES



## ■ CRADLE FEATURES



## LED&BUTTON FUNCTION OF CRADLE

LED and Button	Function and Description
Green LED - Data status indicator	<p>Green LED blinks 3 times with beep when cradle is successfully connected to the terminal via USB cable.</p> <p>Green LED blinks once with beep when cradle received data from scanner.</p> <p>Green LED blinks once with beep when pressing Button A or ButtonB.</p>
Red LED - Handle insertion status indicator	Red LED blinks once with beep when the grip is inserted or removed.
Blue LED - Bluetooth connection status indicator	<p>Blue LED blinks continuously when scanner is not connected to the cradle.</p> <p>Blue LED is always on when scanner is connected to the cradle.</p>
Button A - Mode switching button	Long press for 2 seconds to switch between USB HID and USB VCP modes.
Button B - Function button	<p>Find scanner - Scanner will make a long beep by pressing button B for 2 seconds after Bluetooth of the cradle successfully connected to a scanner.</p> <p>Cradle Bluetooth address output - Bluetooth address of this cradle can be outputted by quick double-click button B in the current working mode.</p>

## LED AND BEEPER INDICATIONS OF SCANNER

Operation	LED Indicator	Beeper Indicator
Power On	Green light blinks 3 times	Beep 3 times
Config Successfully	Green light blinks 2 times	Beep 2 times
Decode Successfully	Green light blinks once	Beep once
Charging	Red light being on	-
Charging Complete	Red light off	-
Bluetooth Paired Successfully	Blue light off	-

## CLEAR PAIRING OF SCANNER AND CRADLE

The pairing of scanner and cradle can be cleared by scanning the barcode below.

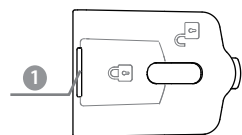
**Note: To replace a scanner connected to the cradle, the pairing of the original scanner must be cleared before the pairing of the new scanner can be connected.**



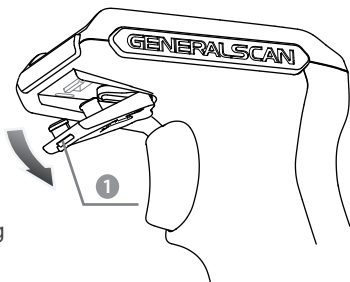
Bluetooth SPP Master Mode

## ASSEMBLE THE SCANNER

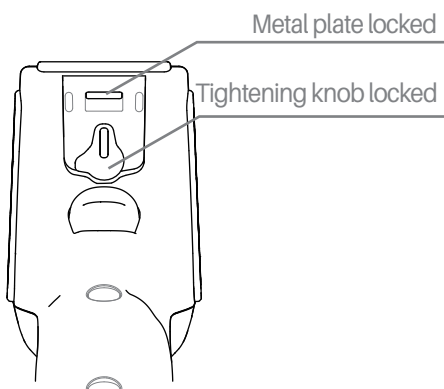
**Step1.** Remove the plug by unscrewing the tightening knob plug ① and remove the plug.



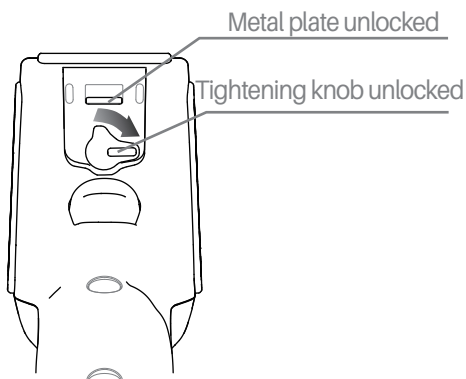
TOP view of scanner tightening knob plug



**Step2.** Expose the scanner tightening knob plug. Both the tightening knob and the metal plate are locked.



**Step3.** Move the scanner fastening knob clockwise to the unlocked position and make sure that the metal plate is in the unlocked state. Please move the metal plate to the unlocked position manually if it is not in the unlocked position.

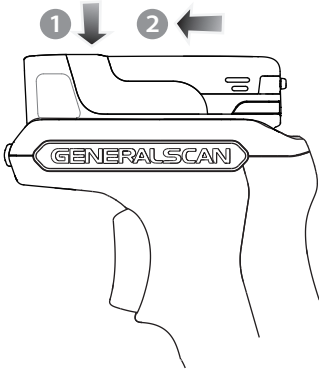


## ASSEMBLE THE SCANNER

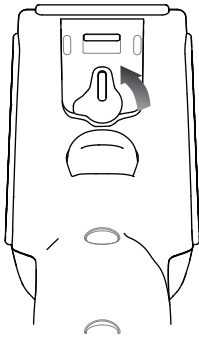
**Step4.** ① Insert the scanner into the slot on the handle. ② Then push the scanner forward to fit it well with the handle.

CHR202-S is for GS R152# & GS R352#

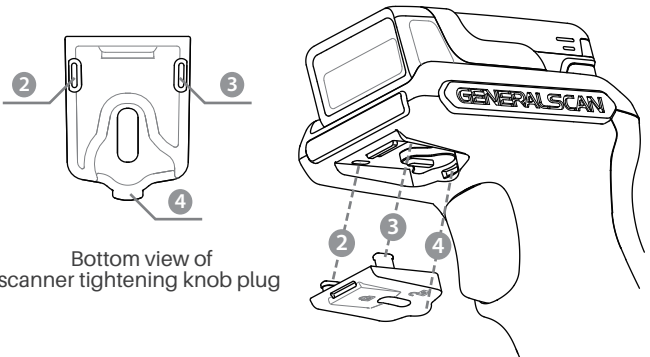
GHR202-L is for GS R1120 & GS R552#



**Step5.** Press the scanner against the handle, and at the same time move the scanner tightening knob counterclockwise to the locked position.



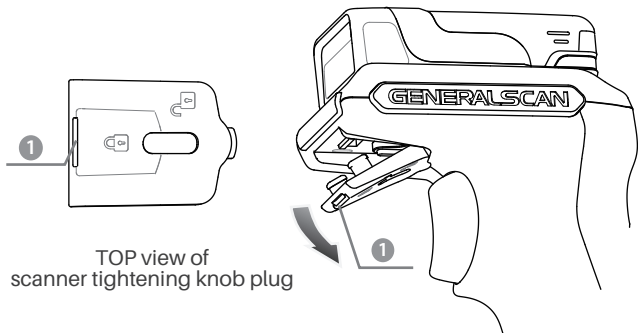
**Step6.** Assemble back the scanner tightening knob plug. Firstly assemble ②③, then assemble ④.



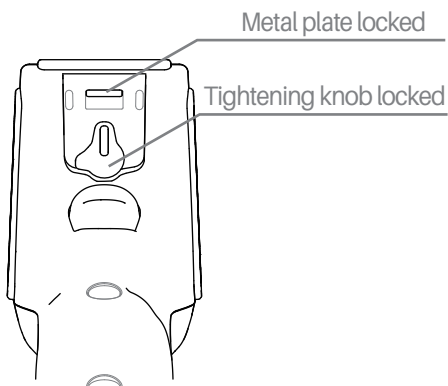
Bottom view of scanner tightening knob plug

## ■ REMOVE OUT THE SCANNER

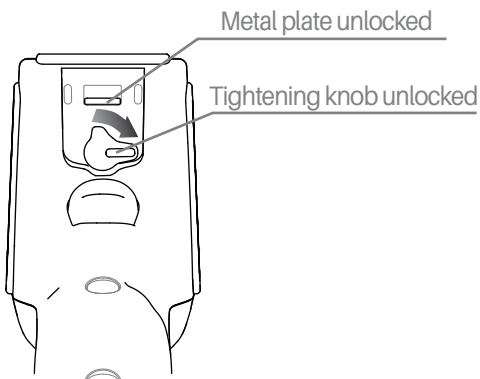
**Step1.** Remove the fastening knob plug by snapping downward at the position ①.



**Step2.** Expose the scanner tightening knob plug. Both the scanner tightening knob and the metal plate are unlocked.



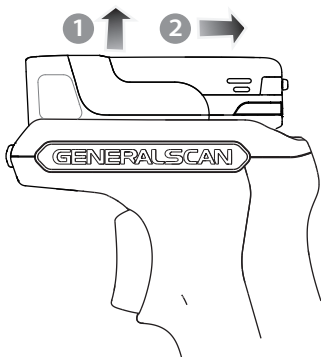
**Step3.** Move the scanner fastening knob clockwise to the unlocked position and make sure that the metal plate is in the unlocked state. Please move the metal plate to the unlocked position manually if it is not in the unlocked position.



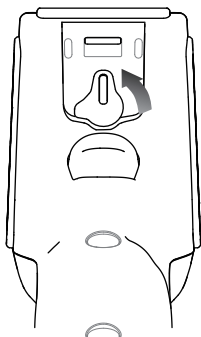


## REMOVE OUT THE SCANNER

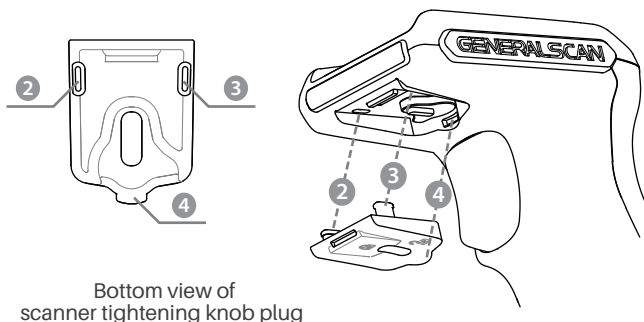
**Step4.** ① Push the scanner backward. ② At the same time, remove out the scanner by lifting upward.



**Step5.** Move the scanner tightening knob counterclockwise to the locked position.



**Step6.** Assemble back the scanner tightening knob plug. Firstly assemble ②③, then assemble ④.



Bottom view of scanner tightening knob plug

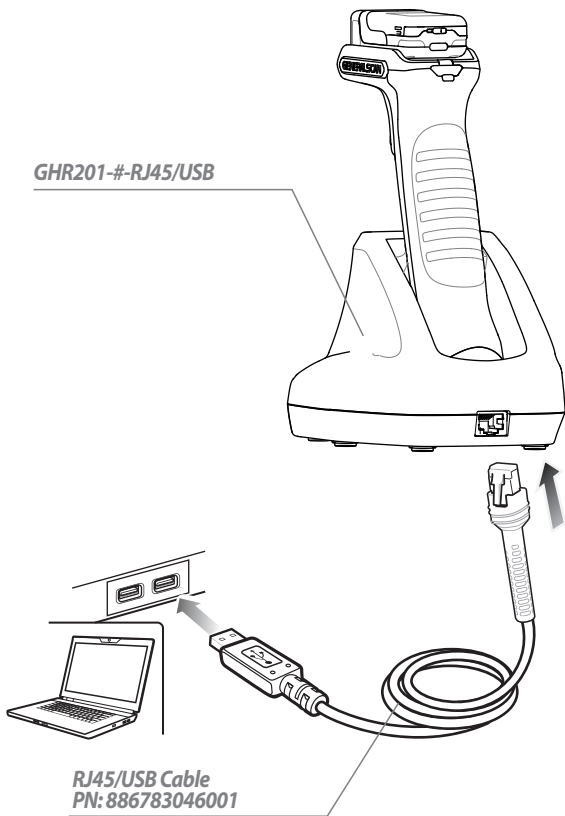
## ■ SCANNER POWER ON AND POWER OFF

Press the yellow trigger button for about 3 seconds to power the scanner on.

Press the yellow trigger button for about 5 seconds to power off the scanner, or automatically power off scanner after Bluetooth disconnected standby for 5 minutes.

## ■ DATA OUTPUT MODE

**GHR201-#-RJ45/USB** refer to the picture as below



## ■ DATA OUTPUT MODE

### USB Mode

#### Step 1. Connect the RJ45/USB Cable

Connect the cradle with terminal device using the RJ45/USB Cable, the green LED on the cradle blinks three times with beep after successfully connected.

#### Step 2. Connect scanner and cradle via Bluetooth

Turn on scanner and scan the Bluetooth address barcode on the cradle to connect scanner and cradle. After successfully connected, the blue LED on the scanner is off and the blue LED on cradle is always on.

#### Step 3. Switch Output Mode

Method 1 - The default output mode of cradle is USB HID mode. Press button A for about 2 seconds to switch between USB HID mode and USB VCP mode.

Method 2 - Scan directly the following barcode to switch the output mode of cradle.



Base USB HID mode



Base USB VCP mode

#### Step 4. Data Output

In USB HID mode, open a notebook on terminal device, the data will be displayed at the cursor when scanning barcodes.

In USB VCP mode, open a serial port software, the data will be outputted in the serial port software when scanning barcodes.

### PARAMETERS

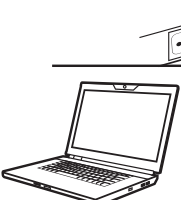
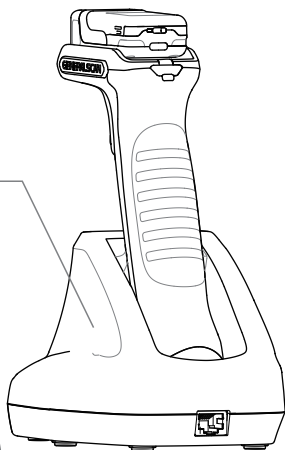
Baudrate 115200	Data Bits 8	Flow Control N	Stop Bits 1
-----------------	-------------	----------------	-------------

■ DATA OUTPUT MODE

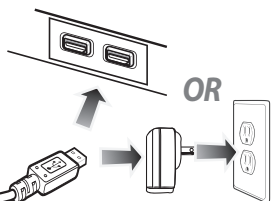
GHR201-#-RJ45/RS232 refer to picture as below

GHR201-#-RJ45/RS232

Data Transmission  
RJ45/RS232 Cable  
PN: 886783049001



USB port or DC5V power supply  
DC/USB Cable PN: 886783050001



## DATA OUTPUT MODE

### RS232 Mode

#### Step 1. Connect Cables

Connect RJ45/RS232 Cable and DC/USB Cable sperately on the cradle and terminal device.

#### Step 2. Connect scanner and cradle via Bluetooth

Turn on scanner and scan the Bluetooth address barcode on cradle to connect scanner and cradle. After successfully connected, the blue LED on scanner is off and the blue LED on cradle is always on.

#### Step3. Data output

Open a serial port software, data will be outputted in the serial port software when scanning barcode.

### PARAMETERS

Baudrate 115200	Data Bits 8	Flow Control N	Stop Bits 1
-----------------	-------------	----------------	-------------

## RESOURCE DOWNLOAD

For more information about product configurations, software, user guides, etc., please download from the website below:

[www.generalscan.cloud/resourcedownload](http://www.generalscan.cloud/resourcedownload)

## Q & A

Problem	Possible Causes	Possible Solution
Why does the cradle cannot power on?	Cradle power supply is abnormal	Reconnect the cable
Why does the scanner cannot decode successfully?	The barcode symbology is wrong	Make sure that the scanner has enabled the code system for the barcode being scanned
	Barcode not clear, damaged	Ensure bar codes are not smudged
	The distance between scanner and barcode is not correct	Re-scan by moving the scanner nearer or further
Why does data cannot transmitted to the terminal device after decoding successfully?	Failed to connect the scanner to the cradle	Reconnect the scanner to the cradle
	Output mode is wrong	Switch output mode
	Cradle cable loosen	Confirm or reconnect cables

### **Service Information**

If you have any question of your GENERALSCAN product, please visit our service page for assistance.

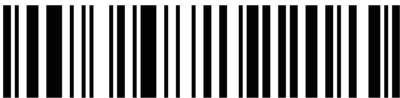
**[www.generalscan.cloud/services](http://www.generalscan.cloud/services)**

## **QUICK START GUIDE**

Email: [Support@generalscan.cloud](mailto:Support@generalscan.cloud)

©2024 GENERALSCAN All rights reserved

Version 1.0



886783055001