

WT3520 Wearable Armband Glove Scanner



Rotating Armbands - Enable Viewing in Landscape and Portrait Modes

Equipped with a 360° rotatable mechanism, these armbands offer users the convenience of effortlessly switching their mobile devices between landscape and portrait orientations. This flexibility empowers users to tailor their viewing experience to suit their tasks, content, or individual preferences. Whether opting for a wider display in landscape mode or a more ergonomic setup in portrait mode, users can easily customize their viewing orientation for enhanced comfort and usability.

Versatile Armband AB2200 - Customize Width Using Side Screws to Secure Mobile Devices of Different Sizes

The versatile AB2200 armband is a practical solution for securing mobile devices of various sizes. Its innovative design allows users to customize the width by adjusting the side screws, ensuring a snug and secure fit for mobile terminals in different sizes. This adaptability makes the AB2200 armband a convenient accessory for individuals who use different devices or frequently switch between devices, offering peace of mind and stability during activities and on the go.

Customizable Arm Strap - Accommodates a Range of Arm Circumferences

Generalscan armbands boast adjustable straps that cater to a multitude of arm sizes, ensuring a personalized and comfortable fit for users of all dimensions. By adjusting the strap, individuals with varying arm thicknesses can enjoy a tailored wearing experience. This adaptable construction not only broadens their utility but also amplifies their comfort level, rendering them suitable for a diverse user base seeking a flexible and snug armband solution.

Combat Germ Transmission through Effortlessly Swappable Comfortable Glove

Given that the glove is the sole component of this wearable device that comes into contact with the skin, we have introduced a two-piece design. This design effectively separates the glove from the scanner body, allowing for individual gloves for each worker. Moreover, the glove material is soft to ensure a comfortable and snug fit.

PRODUCT SPEC SHEET

Wearable Armband Glove Scanner WT3520

ARMBAND PARAMETER

Armband Type	AB1800, AB2000, AB2200
Strap Length	Adjustable, 27cm and 38cm are available for AB2200
Armband Direction	360° rotatable
Applicable Screen Size	AB1800 for terminals with 4.0-6.5 inch screens AB2000 is suitable for screens of any size AB2200 for terminals with 4.7-7.2 inch screens
Armband Material	AB1800 - Silicone, PU, Webbing AB2000 - ABS, PU, Polyester AB2200 - PC, ABS, Webbing

SCANNER PHYSICAL PARAMETER

Scanner Dimensions	64.8mm(L) × 34.6mm(W) × 24.8mm(D)
Scanner Weight	30.3g(Scanner body)
Notification	LED, Buzzer, Vibration

INTERFACE

USB Interface	USB Type-C
Coiled Cable	Both ends Type-C connector, 165mm
USB Protocol	USB HID Keyboard, USB VCP (Virtual Serial Port)
Multilingual Keyboards	USB HID mode supports multilingual keyboards

DECODE RANGES

5mil Code128	63.0 - 127.0MM
5mil Code39	51.0 - 162.0MM
6.6mil PDF417	63.0 - 160.0MM
10mil PDF417	45.0 - 228.0MM
20mil Code39	50.0 - 495.0MM
100%UPC	50.0 - 317.0MM
20mil DataMatrix	38.0 - 343.0MM
20mil QR	38.0 - 279.0MM

PERFORMANCE CHARACTERISTICS

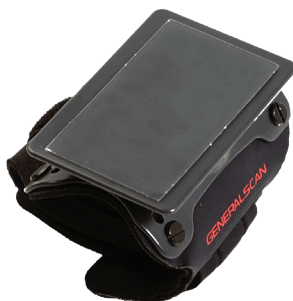
Optical Resolution	600 x 480 pixels
Shutter	Rolling shutter
Sensor	2D CMOS Image
Skew, Pitch & Roll	Skew tolerance: ±60° from normal Pitch tolerance: ±60° from normal Roll tolerance: 360° from normal
Illumination	Red LED
Aiming	Red LED
Supported	1D: Code39, Code128, Codabar, Code11, UPC/EAN, Interleaved
Symbologies	2 of 5, Discrete 2 of 5, Chinese 2 of 5, Matrix 2 of 5, Korean 3 of 5, GS1 Databar, Code93, MSI, Composite 2D: PDF417, Postal CodesMicro PDF, Micro PDF417, Code128 Emulation, Aztec, Data Matrix, GS1 Data Matrix, QR Code, GS1 QR, Maxicode, Micro QR, Han Xin, Grid Matrix,

USER ENVIRONMENT

Ambient Light	Max 107639lux (direct sunlight)
Operating Temperature	-10°C~50°C
Storage Temperature	-10°C~50°C
Humidity	5% - 85% non-condensing
Drop Spec.	Multiple 4.9ft./1.5M drops to concrete
Tumble Spec.	Scanner body withstands 20,000 times from 3.3ft./1M with frequency of 10 times per minute.
Electrostatic	±8kv dc discharge, ±15kv air discharge
Discharge (ESD)	
Certificates	RoHS, NOM, EAC



AB1800



AB2000



AB2200

GENERALSCAN

Generalscan Inc.

200 Buckelew Ave, Jamesburg,
NJ 08831, USA
+1 732 895 6821

Generalscan Electronics GmbH

Hochstraße 42, 52525
Heinsberg Germany
+49 1516 7161256

Generalscan LLC

Calle San Luis Potosi 51,
Roma Norte 06700,
Ciudad de México
+52 5552727861

GENERALSCAN ELEKTRONİK VE TEKNOLOJİ SAN. VE TİC. LTD. ŞTİ.

FSM Mah. Siir Sk. Relux Plaza No 10,
Ümraniye 34764,
İstanbul, Turkey
+90 542 478 5873